

TAMRON®

Comfort is Knowing that Tamron's on Duty — Day and Night

IR Corrected Telephoto Vari-Focal Lens for 1/2" Camera



IR (Infrared) Corrected Lens Series

f = 4.0-12mm F/1.2

Imager Size: 1/2", f=4.0-12mm, F/1.2, Angle of view: 93.7°(wide) 31.2°(tele)

**Lineup: 12VG412ASIR (DC Iris), 12VM412ASIR (Manual Iris)
12VA412ASIR (Video Iris)**

When a sense of security is at hand, count on Tamron's eye for quality. Choose Tamron's fast & compact 4.0–12mm F/1.2 IR Vari-Focal Lens for superior images day or night.

- Broad angle of view affords unusually excellent surveillance capability.
- Advanced IR corrected optics eliminates any shift of focus in both visible and IR ranges for optimum results with day/night cameras.
- Aspherical design delivers sharpness and contrast in all light, from low to bright.
- Fast F/1.2 maximum aperture and F/360 minimum aperture deliver sharpness and contrast in all light, from low light to harsh bright lighting conditions.

Perfect for reliable around-the-clock surveillance of spaces requiring a wide angle of coverage, this lens provides a horizontal field of view ranging from 93.7° at wide angle to 31.2° at telephoto with a 1/2" CCD camera. Tamron's aspherical lens design keeps its size small and

its features plentiful, delivering top-quality images under virtually any lighting conditions. With special LD (Low Dispersion) glass as part of the IR correction formula, it is fully compatible with today's finest high resolution day/night cameras.



Wide-end (f=4mm) 93.7° angle of view



Tele-end (f=12mm) 31.2° angle of view

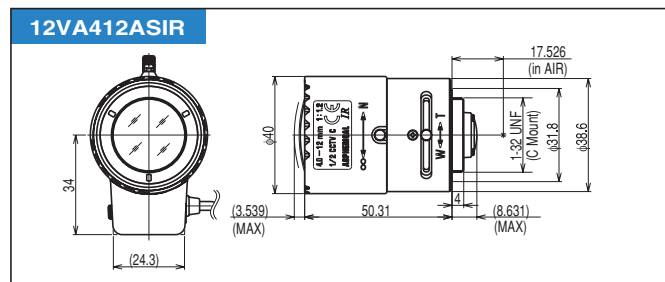
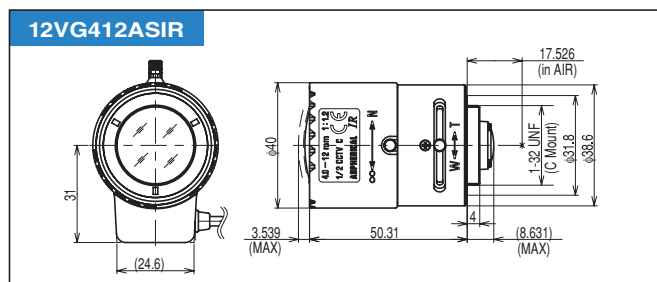
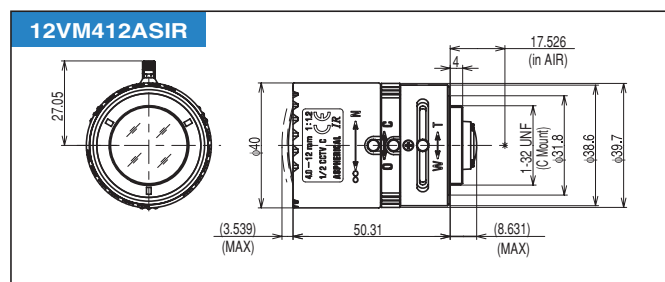


12VG412ASIR

SPECIFICATIONS

	12VM412ASIR	12VG412ASIR	12VA412ASIR
Imager Size		1/2"	
Mount Type		C-mount	
Focus Length		f=4-12mm	
Aperture Range	F1.2-Close	F1.2-360	F1.2-360
Angle of View (Horizontal x Vertical)	Wide 93.7° x 68.9° / Tele 31.2° x 23.4°		
Focusing Range	0.3m~∞		
Operation	Focus	Manual (w/Lock)	
	Zoom	Manual (w/Lock)	
	Iris	Manual (w/Lock)	Auto Iris (DC)
Weight	57.5g	68g	72g

Dimensions



Caution : Please read the instruction manual carefully before using the lens.

TAMRON® Manufacturer of lenses for photographic, industrial, laboratory, video, and scientific applications.

TAMRON CO., LTD.
1385, Hasunuma, Minuma-ku, Saitama City, Saitama, Japan, 337-8556
TEL +81-48-684-9129 FAX +81-48-683-8594
URL <http://www.tamron.co.jp>
e-mail: tokki@tamron.co.jp



ISO 9001 Certified
Tamron operates a quality management system that has been certified as conforming to ISO 9001.

ISO 14001 Certified
Tamron operates an environmental management system that has been certified as conforming to ISO 14001.

r100
Printed on 100% recycled paper



Specifications subject to change without notice 2005.3
412-EG-111-U-0505-0010