



H3-EM Electronic Locking Swinghandle

Electronic access

- Remote lock and unlock
- Single or multi-point
- Low power, gear motor driven mechanism
- Momentary or continuous lock actuation
- High Security DIN lock manual override
- Directly integrates with industry standard rack monitoring and access control systems
- Fits industry standard panel preparations
- Integrated sensors detect lock and handle status for network control, monitoring and alarm functions
- Accommodates both left and right doors

Electronic locking swinghandle provides the functionality of a manual latching system with the added benefit of electronic locking for access control and remote monitoring.



Alternatively, the Electronic Swinghandle can provide access control to networked rack control and monitoring systems for addressable remote access control over the internet. Integrated lock sensors provide local LED indication plus generate output signals for remote access monitoring.

The **SOUTHCO®** Electronic Locking Swinghandle can be combined with any access control device for a basic self contained electronic access solution.



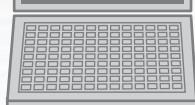
Other options available. For complete details on variety, part numbers, installation and specification, go to



www.southco.com/H3EM



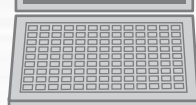
Electronic
Lock engaged
Handle closed



Secure
Cabinet



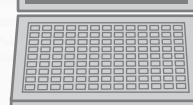
Electronic
Lock retracted
Handle closed



Electronically
unlock



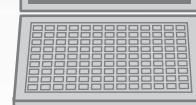
Electronic
Lock retracted
Handle released



Manually operate
handle



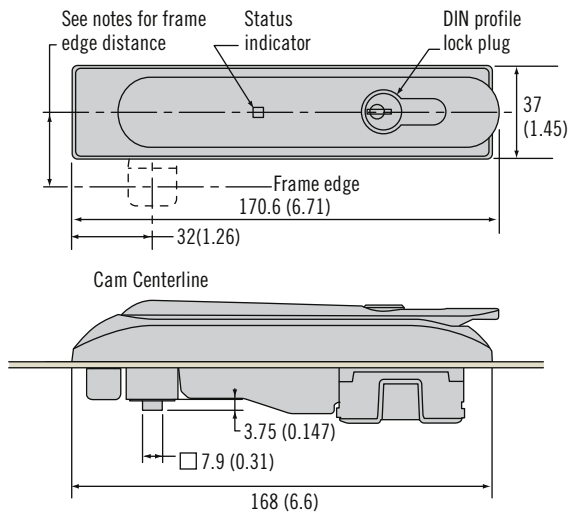
Electronic
Lock engaged
Handle released



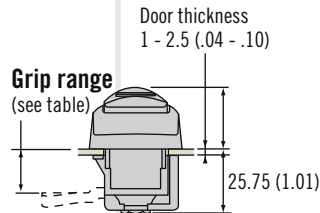
DIN lock manual
override

H3-EM Electronic Locking Swinghandle

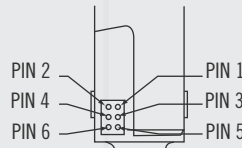
Electronic access



ACTUAL SIZE

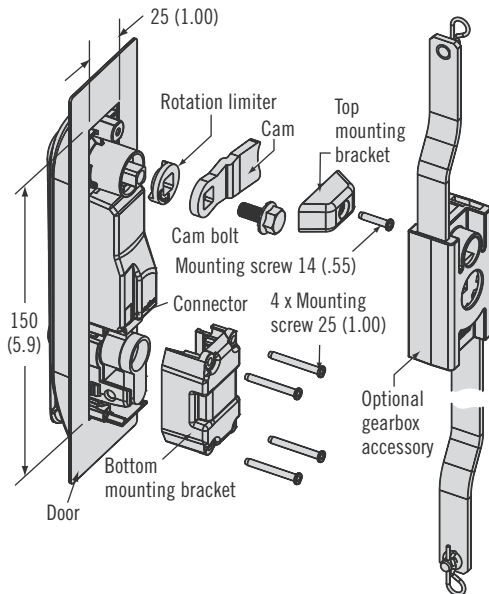


Connector Detail



Swinghandle Part Number

H3-EM-60-100



Wire Harness with Mate Connector (stripped and tinned opposite end)



Cam Part Number (order separately)

Grip	Cam length 38 (1.5)	Cam length 45 (1.77)
15.5 (.61)	E5-6710	-
17.5 (.69)	E5-6711	-
19.5 (.77)	E5-6712	E5-6112
21.5 (.85)	E5-6713	E5-6113
23.5 (.93)	E5-6714	E5-6114
Other	Please contact Southco	

Wire Harness with Mate connector (order separately)

Part Number	Length
EA-W01-100	1000 (39.4)
EA-W01-200	2000 (78.7)

Gear Box Part Number (order separately)

H3-61-55-33	Left Hand
H3-61-56-33	Right Hand

Material & Finish

H3-EM Swinghandle
Housing, handle, mounting bracket:
Glass-filled nylon, black
Shaft, rotation limiter: Die-cast zinc,
bright sealer

Electrical Specifications

Recommended operating voltage:
12VDC to 24VDC
Typical operating current: Less than
200mA at 12 VDC
Peak / stall operating current: 1 Amp
Standby current: 50mA Max.
Output signal rating:
200mA Max. load

Connector Pin Assignment

PIN 1: Ground (-)
PIN 2: Power (+)
PIN 3: Not Used
PIN 4: Control signal
PIN 5: Electronic Lock status output
PIN 6: Mechanical lock status output

Mating Connector Detail

Hirose Electric Co. Ltd.
Part number DF11-6DS-2C
Crimp socket
Part number DF11-Series
Crimping contact for socket
24 AWG wire minimum recommended

Notes

For grip ranges 15.5-18.5 (.61-.73)
Max. cam length of 38 (1.5).
Frame edge distance of 30 (1.18)
For grip ranges greater than 18.5
(.73) Max. cam length of 45 (1.77).
Frame edge distance of 37 (1.46)
For multipoint systems, select right or
left hand gear box part number from
table, then see Southco Handbook
pages 264-265 for rod selection
Product shipped with 3 keys

Dimensions in millimeters (inch) unless otherwise stated



Global Corporate Headquarters and Americas Customer Service & Technical Support Center
Tel: (1) 610-459-4000 · Fax: (1) 610-459-4012 · www.southco.com · info@southco.com

Other options available. For complete details
on variety, part numbers, installation and
specification, go to



www.southco.com/H3EM

© Southco H3-EM NA 06-09