

## MAXPRO® NVR SE (Standard Edition)

[www.honeywellvideo.com](http://www.honeywellvideo.com)

### 32-CHANNEL NETWORK VIDEO RECORDER (NVR)

Honeywell's MAXPRO NVR SE is an open, flexible and scalable IP video surveillance system. Utilizing Honeywell's high definition cameras, MAXPRO NVR SE is a powerful, high definition IP recording system and viewing client for small to medium size installations. MAXPRO NVR SE is an open platform and supports broad third party device integrations with support for PSIA and ONVIF (including Profile S devices), real time streaming protocol (RTSP) standard and native device integrations including 360° camera support.

MAXPRO NVR SE provides easy to use desktop clients, web client and mobile apps—MAXPRO Mobile. The Web Client is supported from any standard Mac or PC browser and requires no additional install, provides the value of reduced setup, maintenance and improved compatibility. The interface is simple and intuitive with all the functionality and features that users need for daily surveillance operations, such as live view and playback of recorded video.

MAXPRO NVR SE comes pre-installed with all required software and is also pre-licensed for 32 channels. This, along with an easy 3-Click\* wizard to live video for auto configuration, makes installing an IP system quick and efficient without requiring any IT expertise. Simple and logical configuration pages make setup a breeze even for the novice installer.

The MAXPRO NVR SE user interface is based on Honeywell's flagship MAXPRO VMS user interface which offers a feature rich user experience and is common across the MAXPRO NVR Family. Utilization of this familiar interface allows for the "learn one, know them all" concept that allows for familiarity across a broad range of Honeywell products saving training costs.

MAXPRO NVR SE supports simultaneous recording, search, and system management for up to 32 IP cameras including high definition formats. Multiple MAXPRO NVRs can be deployed for system expansion using a distributed architecture and integrated with the MAXPRO Viewer multi-site software or MAXPRO VMS enterprise video management system.

MAXPRO NVR SE utilizes powerful processor and memory technology supporting multiple simultaneous operations such as video recording and video viewing or alarm monitoring. End users can view live video while simultaneously performing searches. MAXPRO NVR SE also offers advanced features. Honeywell's patented Video Surround feature provides the ability to track subjects of interest as they move between areas covered by adjacent cameras by simply double-clicking on the panel where the subject is currently visible. Features such as the powerful calendar, preview search options and film strip view allow for rapidly searching video for scenes of interest and then quick export method transfers video to an authenticated video clip playable through Windows Media player.

*\*With default settings and in a local area network.*

#### Market Opportunities

The continual growth of IP networks and the demand for high definition video have led to the need for convergence of building security systems and IT systems for many companies across the globe. This has resulted in a strong demand for an all-IP end-to-end security system deployment. MAXPRO NVR SE provides an open, flexible and scalable system with operational power to address the needs of a wide variety of applications including education, commercial, retail, healthcare and many other applications. When the need is for an easy to install, simple to use, and feature rich network video recorder, the solution is MAXPRO NVR SE.



MAXPRO NVR SE  
Rev B Server

HD



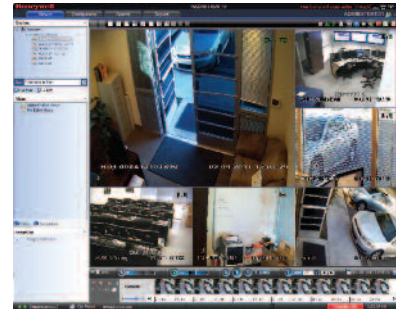
## FEATURES

### Software

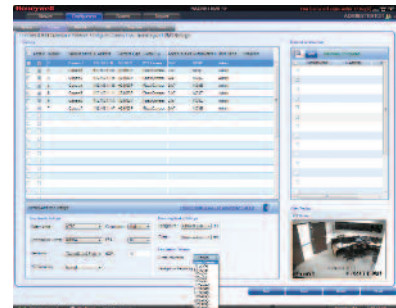
- MAXPRO NVR SE allows local or remote operations including live and recorded video monitoring, configuration and system management in a single desktop client interface.
- Support for Web Client on Windows PC (Internet Explorer, Chrome and Firefox browsers) and Mac (Safari browser). Supports live, playback/search of recorded video for up to 1080p resolution on all cameras, taking snapshots and viewing presets for PTZ cameras
- Support for mobile monitoring clients on iOS and Android with MAXPRO Mobile apps
- Broad device integrations: Honeywell cameras and encoders, third party devices with support for standards—PSIA and ONVIF (including Profile S devices), RTSP standard and native device integration including 360° camera support.
- Feature-rich, user-friendly Windows based interface to view HD video and configure system settings.
- Easy 3-click\* wizard to set up the system with auto-configuration and auto-discovery of IP cameras, recording and monitoring configuration—without any IP video expertise.
- Multi-zoom views on HD video. Example: Zoom in on a cash register in one view of the HD camera while at the same time monitoring the cash operator in the zoom out view of the HD camera.
- Ability to investigate events and alarms by simultaneously viewing alarm videos at various stages. For every alarm, users can view the video captured during pre-alarm, on-alarm, and post-alarm, and also view live video from the camera which triggered the alarm.
- Enriched video viewing experience through the intuitive video rendering engine that optimizes CPU utilization by altering the video frame rate.
- Honeywell's patented Video Surround feature simplifies the process of tracking subjects through a set of surrounding cameras.
- Create, save and name salvos under My Salvos or Shared Salvos.
- IP PTZ control and digital zoom on fixed cameras. 360° immersive viewing experience providing heightened situational awareness and increased video surveillance coverage.
- Fast search by date/time, time line, time jump, bookmarks, calendar, preview, film strip view and events. Increase productivity with more efficient search/investigation: Get to the relevant video in few clicks without having to review hours of recordings.
- Event history and operator log reporting with export in .pdf, Crystal Reports, Excel or Word.
- Capture and export clips and still images in simple .wmv and .bmp formats. Clips signed with digital signature for authentication
- Supports multiple client connection to NVR Server.
- Separate event video and general recorded video retention times.
- Email notification on camera, system and operator events.
- Role-based operator privileges supporting Windows and local users.
- Flexible Motion detection (VMD) options with Server (Smart VMD) or Camera based motion events support. Reduced false alarms with object based motion detection analytics with Smart VMD.
- Advanced security features with encryption support for communication between desktop client to NVR and secure https login for Web Client
- Keyboard control with UltraKey Plus and UltraKey Lite over Ethernet.
- Local and multi-language support.
- Multi-site support with MAXPRO Viewer.
- Integration with MAXPRO VMS.
- Integration with WIN-PAK® and Pro-Watch® Access Control Systems.

### Hardware

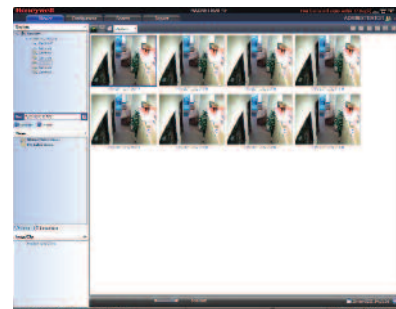
- Record and monitor up to 32 channels at 960 fps @ 4CIF/VGA or 960 fps @ 720p HD or 640 fps @ 1080p HD per MAXPRO NVR SE. Network bandwidth/throughput supported per NVR with Incoming: 120 Mbps, Outgoing: 120 Mbps providing a Total: 240 Mbps.
- Supports One-Way Audio (for specific IP cameras) with live and playback on desktop clients for up to 32 IP channels
- Includes HDMI, VGA, DVI-D and Display ports for dual monitor support
- MAXPRO NVR SE supports displaying 16 cameras at one time, greater numbers of cameras can be displayed by adding additional client workstations
- 6 removable bays with 1 operating system & storage hard drive and 5 storage only hard drives (optional 1 TB, 2 TB, 3 TB or 4 TB drives)
- Internal storage capacity from 1 TB to 24 TB
- Includes dual 1 GB Network ports optimized to separate record and viewing data to ensure 100% recording and smooth playback even with multiple client connections
- 2U rack mount form factor with locking front bezel. Rack rails included for use with four post racking systems



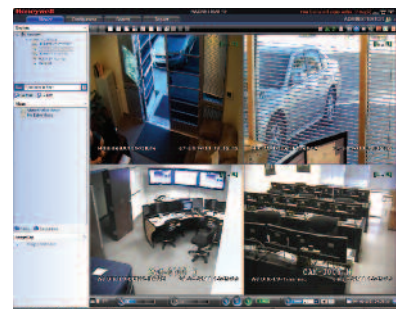
6 Split



Event Record



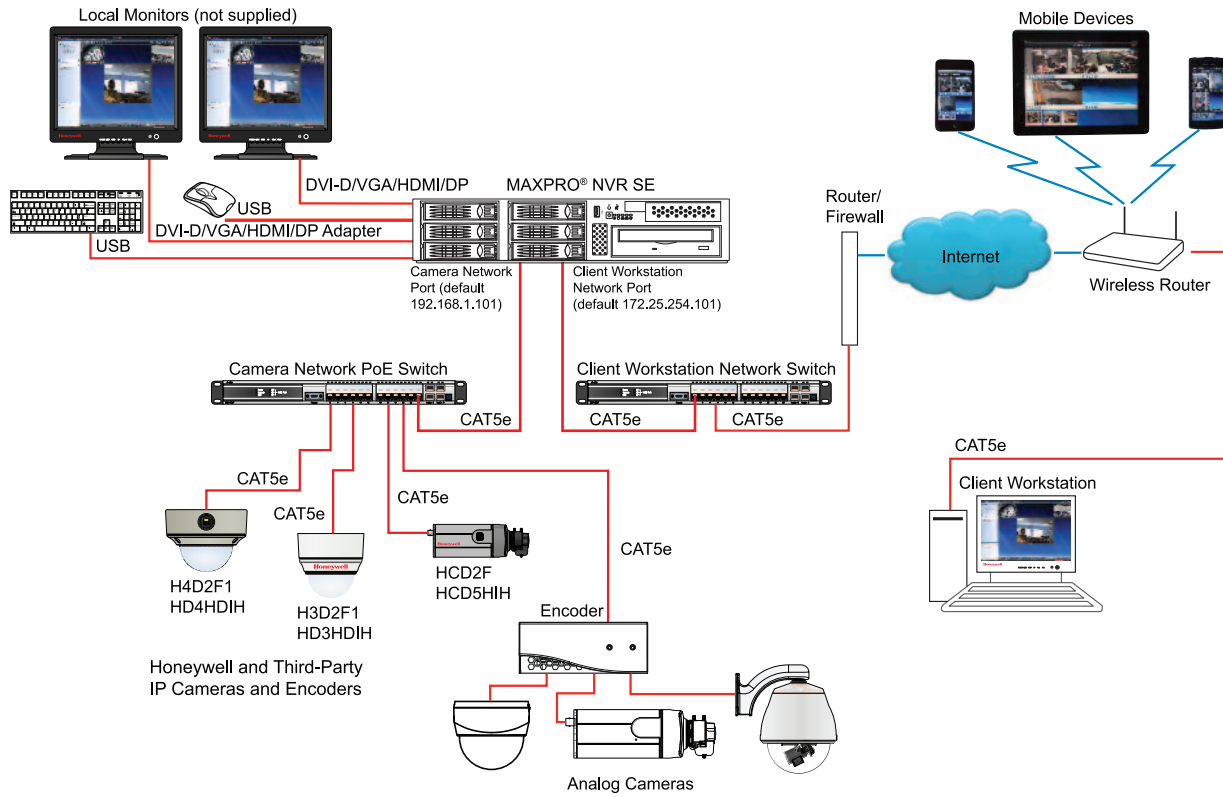
Preview



Quad

# MAXPRO® NVR SE

## SYSTEM DIAGRAM



## SPECIFICATIONS

Operational		Operational	
<b>MAXPRO NVR SE Software - Version 3.1 or above</b>		<b>MAXPRO NVR SE Hardware</b>	
Database	Microsoft SQL Express 2008 R2	Processor	Intel® Core™ i7-4770 3.4 GHz
Operating system	Windows Embedded Standard 7 SP1, 64-bit	Memory	8 GB
Image compressions supported	MPEG-4, H.264	Power supply	Single 480 W
Supported Honeywell IP cameras and encoders	Supports Performance Series IP, equip® Series cameras including high definition. Refer to <a href="http://www.honeywellsecurity.com/hota">www.honeywellsecurity.com/hota</a>	OS Partition	100 GB partition in storage drive 1
Supported third party IP cameras and encoders	Refer to the Honeywell Open Technology Alliance for a comprehensive list of compatible products to which this device is integrated. <a href="http://www.honeywellsecurity.com/hota">www.honeywellsecurity.com/hota</a>	Storage capacities	1 TB to 24 TB
Audio Support	1-way audio for specific IP camera models. Refer to <a href="http://www.honeywellsecurity.com/hota">www.honeywellsecurity.com/hota</a>	Storage hard drive options	6 bays - 1 operating system & storage drive, 5 field-upgradable, 1, 2, 3 or 4 TB SATA hard drives
Maximum number of desktop client connections	18 remote per unit from 9 remote workstations + 2 local on NVR server	Optical	22x DVD-RW
Salvo layouts	Desktop Client - Full, 2x2, 1x5, 3x3, 2x8, 1x12, 4x4. Web Client - 2x2, 1x1, 1x2, 1x3	Network	Two 1 GB Ethernet included
Picture controls per camera	Sharpness, blur, brightness, contrast, hue, saturation, maintain aspect ratio, stretched, original size and picture mirror	Chassis with locking bezel	2U 6 bay including rack mount kit
OSD	Concealed text option	<b>Rear Panel Connections</b>	
Playback controls per camera	FWD/REV Play x (1, 2, 4, 8, 16) Slow FWD/REV Play x (1/2, 1/4, 1/8)	Mouse and keyboard	2x USB
Search types	Time/date timeline, time jump FWD/REV, bookmarks, calendar, preview, film strip and event search	USB	1x Front, 6x Back
Recording schedule	Constant and event based with H/M/D and holiday and exception days	Network	2x RJ45
Recording methods per camera	Constant, event based and user activated	Monitor output	Dual monitor support-1 HDMI, 1 VGA, 1 DVI-D, 1 Display port
Live settings per camera	Compression format, resolution and frame rate	<b>Electrical</b>	
Record settings per camera	Same as live or reduced frame rate	Input voltage	110-240V ~ 50/60 Hz 7A
Clip format	WMV with digital certificate for authentication playable with Windows media player	Power consumption	Up to 480 W
Video clip authentication	Digital signature, verification tool provided	<b>Mechanical</b>	
Motion detection location	Camera based for supported models or Server based (Smart VMD) for all models (except 360 fisheye/panomorph views)	Construction	Housing: Steel chassis Finish: Black matte paint
Event recording	Pre and post duration setting	Dimensions (L x W x H)	27.0" x 19.0" x 3.5" 686 mm x 483 mm x 89 mm
Operator reporting	Per user, configurator, session and viewer	Weight	Unit: 30 lbs (12.7kg) to 35 lbs (15.9kg) Shipping: 46 lbs (20.8kg) to 51 lbs (23.1kg)
Event report	Per camera or recorder events	<b>Environmental</b>	
Operators	1024	Temperature	Operating: 5°C to 40°C (40°F to 104°F) Storage: -10°C to 65°C (14°F to 150°F)
<b>Recording and Monitoring Performance</b>		Relative Humidity	0% - 90%, non-condensing
Max Video Streams Support	960 fps @ 4CIF/VGA or 960 fps @ 720p HD or 640 fps @ 1080p HD. 1-way audio for up to 32 IP channels. Network bandwidth/throughput - Incoming: 120 Mbps, Outgoing: 120 Mbps, Total: 240 Mbps		
Server based VMD (Smart VMD) performance - channels supported	Web Client: Total Streams Limit - 32 (live + playback). <b>Note:</b> Live streams consumed are per camera being viewed live and duplicate live views of the same camera in multiple or same web client instance are allowed without consuming additional streams. Playback streams consumed are per playback stream being viewed and each playback stream being viewed consumes 1 additional stream. Desktop Client: Live - 160 streams, Playback/Video retrieval sessions - 32, Sync playback - 9 streams.		
	Channels at max fps: 32 ch at 960 fps @ 4CIF/VGA or 32 ch at 960 fps @ 720p or 16 ch at 640 fps @ 1080p. All Channels at fps: 32 ch at 960 fps @ 4CIF/VGA or 960 fps @ 720p or 320 fps @ 1080p. <b>Note:</b> Local client - 2x2 view for 1080p and 4x4 view for all other lower resolutions.		
<b>Warranty</b>		Warranty and Advanced Replacements	Refer to <a href="http://www.honeywellvideo.com/support/warranty/index.html">http://www.honeywellvideo.com/support/warranty/index.html</a>

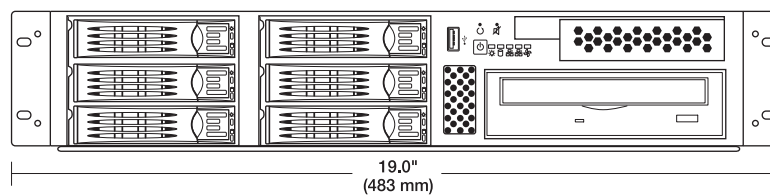
## SPECIFICATIONS

MAXPRO NVR Client Only Workstation – Minimum Specifications	
Processor	Intel® Core™ 2 Duo Processor E6750 2.66 GHz or Quad Core Intel® Xeon® E5405 2.0 GHz
System Memory (RAM)	Minimum 4 GB or Higher
OS & Application – Hard Disk Drive or Partition	Minimum 100 GB Partition drive or separate hard drive
Graphics Adapter	512 MB or higher Display Card for Dual Monitor – DirectX 9 Compatible
Network Interface	Minimum – 1 Gigabit network interface card
Optical Drive	DVD-RW
Monitor Resolution	Video resolution 1280x1024 pixels, 32 bit
Keyboard/Mouse	102-key keyboard and mouse
Operating System Options	Microsoft® Windows 7 Professional SP1 (32-bit and 64-bit), Microsoft® Windows Server 2008 R2 SP1

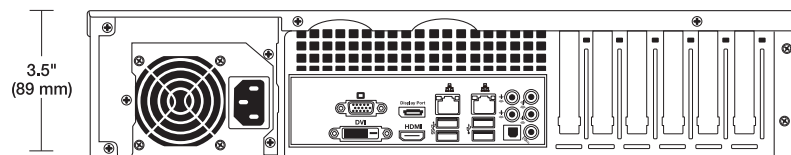
**Note:** The minimum specifications above are recommended for systems with fixed or PTZ cameras only. For systems with multiple 360 cameras using full immersive experience with dewarping and playback requires superior workstation specifications than above.

## SYSTEM DIMENSIONS

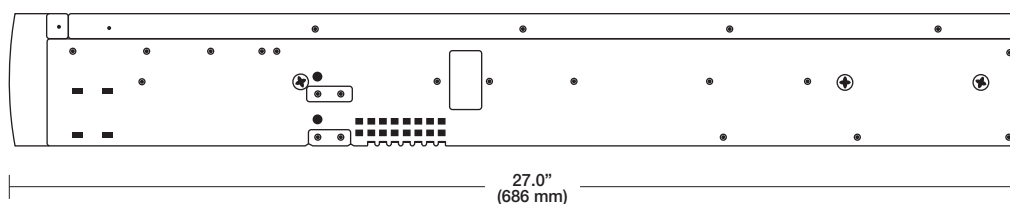
**Front View**



**Rear View**



**Side View**



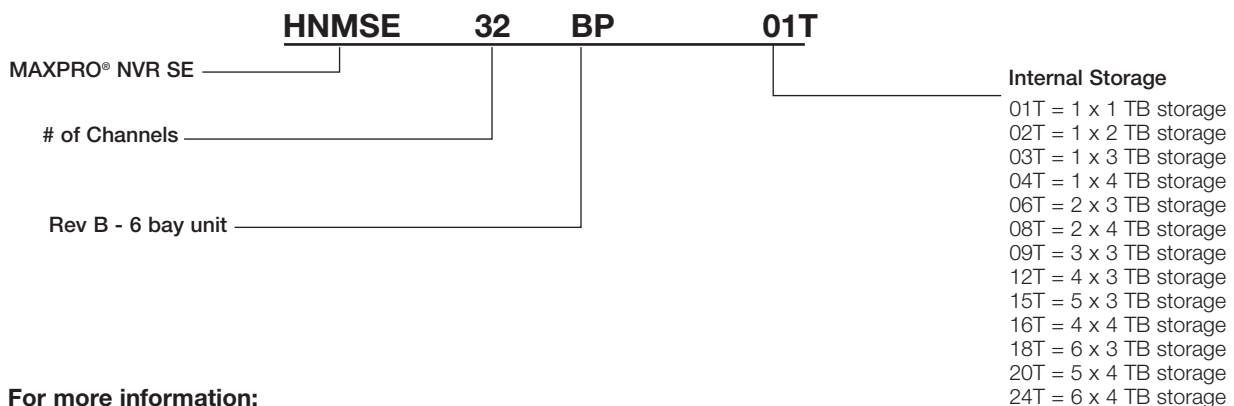
## ORDERING

MAXPRO NVR SE	
HNMSE32BP01T	MAXPRO NVR SE, 32 Channel, 1 TB, Performance Package, 1 x 1 TB HD, 5x spare HD slots
HNMSE32BP02T	MAXPRO NVR SE, 32 Channel, 2 TB, Performance Package, 1 x 2 TB HD, 5x spare HD slots
HNMSE32BP03T	MAXPRO NVR SE, 32 Channel, 3 TB, Performance Package, 1 x 3 TB HD, 5x spare HD slots
HNMSE32BP04T	MAXPRO NVR SE, 32 Channel, 4 TB, Performance Package, 1 x 4 TB HD, 5x spare HD slots
HNMSE32BP06T	MAXPRO NVR SE, 32 Channel, 6 TB, Performance Package, 2 x 3 TB HD, 4x spare HD slots
HNMSE32BP08T	MAXPRO NVR SE, 32 Channel, 8 TB, Performance Package, 2 x 4 TB HD, 4x spare HD slots
HNMSE32BP09T	MAXPRO NVR SE, 32 Channel, 9 TB, Performance Package, 3 x 3 TB HD, 3x spare HD slots
HNMSE32BP12T	MAXPRO NVR SE, 32 Channel, 12 TB, Performance Package, 4 x 3 TB HD, 2x spare HD slots
HNMSE32BP15T	MAXPRO NVR SE, 32 Channel, 15 TB, Performance Package, 5 x 3 TB HD, 1x spare HD slots
HNMSE32BP16T	MAXPRO NVR SE, 32 Channel, 16 TB, Performance Package, 4 x 4 TB HD, 2x spare HD slots
HNMSE32BP18T	MAXPRO NVR SE, 32 Channel, 18 TB, Performance Package, 6 x 3 TB HD
HNMSE32BP20T	MAXPRO NVR SE, 32 Channel, 20 TB, Performance Package, 5 x 4 TB HD, 1x spare HD slots
HNMSE32BP24T	MAXPRO NVR SE, 32 Channel, 24 TB, Performance Package, 6 x 4 TB HD
Accessories	
HNMSEBRAM4GB	RAM 4 GB Upgrade, MAXPRO NVR SE, Rev B Server (required only for units with 4 GB RAM)
HNMSEBHD1T	1 TB Upgrade Kit, MAXPRO NVR SE, Rev B Server
HNMSEBHD2T	2 TB Upgrade Kit, MAXPRO NVR SE, Rev B Server
HNMSEBHD3T	3 TB Upgrade Kit, MAXPRO NVR SE, Rev B Server
HNMSEBHD4T	4 TB Upgrade Kit, MAXPRO NVR SE, Rev B Server

Refer to the storage calculator on [www.honeywellvideo.com](http://www.honeywellvideo.com) to help determine what size unit to order.

**NOTE:** Honeywell reserves the right, without notification, to make changes in product design or specifications.

### MAXPRO NVR SE - Part Number Lookup



#### For more information:

[www.honeywell.com/security](http://www.honeywell.com/security)

#### Automation and Control Solutions

Honeywell Security Products Americas  
 2700 Blankenbaker Pkwy, Suite 150  
 Louisville, KY 40299  
 1.800.323.4576  
[www.honeywell.com](http://www.honeywell.com)

