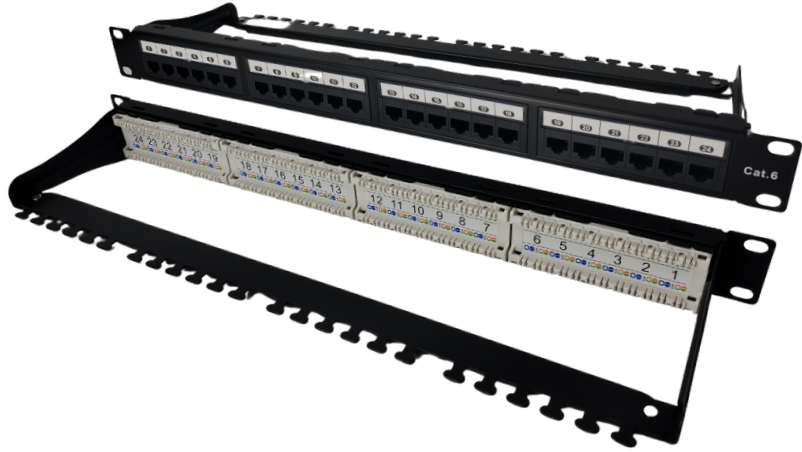


CAT6 PATCH PANEL

ADI-PP-C6-24-180

ADI
PRO

CAT6 Patch Panel 24 Port



Features

Current Rating: 1.5 Amps

Insulation Resistance: $\geq 500 \text{ M}\Omega$

Contact Resistance: $\leq 10 \text{ M}\Omega$

DC Resistance: $\leq 0.1 \Omega$

DC/AC Volt Endurance: DC1000V/AC750V Per 1min

Made from high quality engineering plastic

ANSI/TIA-568.2-D; ISO/IEC 11801-1; IEC 60603-7-41
Compliant

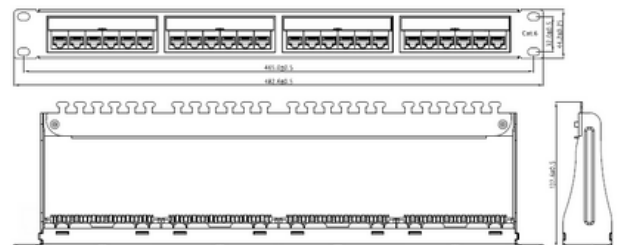
RoHS 2002/95/EC Compliant

Dimensions: 482mm x 45mm x 133mm

Warranty : 24 months

Part Code

ADI-PP-C6-24-180 | UPC: 840049310087



For more information contact
your ADI sales person or visit us
at www.adiglobal.com

Rev: Jan 24



CAT6 PATCH PANEL

ADI-PP-C6-24-180

ADI
PRO

Additional Information

Plug Insertion Life: ≥ 750 Cycles (With a Compliant RJ45 Plug)

Plug and Jack Contact Force ≥ 100 Grams (With a Compliant RJ45 Plug)

Panel Frame: SPCC Powder Coating in Black Colour

Durability: 200 Termination Cycles

Operating Temperature: 10 - 60 °C

Operating Humidity: 10% - 90% RH

Storage Temperature: -40°C - 68°C

Jack Wire: 0.35mm Phosphor Bronze 50U" Gold over Nickel Plating

PCB: FR-4 1.6mm Thickness

IDC Conductor: 0.5mm Phosphor Bronze and Tin Plating

Contact Compatibility: 26 to 23 AWG Solid

For more information contact
your ADI sales person or visit us
at www.adiglobal.com

Rev: Jan 24

